

REVOLUTION

COMPETITION ▲ WHEELS



*History
Pedigree
Innovation*



DMS[®]
SHOCK ABSORBERS

REVOLUTION COMPETITION WHEELS



4 SPOKE *Classic Rally*

SIZE	PCD RANGE	OFFSET RANGE ET	C DIMENSION BACKSPACE	APPROX WEIGHT
13 x 5.0	4 / 95.25 to 114.3	04 to 20	79 to 95	5.1 to 5.3
13 x 5.5	4 / 95.25 to 114.3	10 to 26	92 to 108	5.3 to 5.5
13 x 6.0	4 / 95.25 to 114.3	16 to 32	104 to 120	5.5 to 5.7
13 x 7.0	4 / 95.25 to 114.3	00 to 20	100 to 120	5.8 to 6.0
13 x 8.0	4 / 95.25 to 114.3	-06 to 20	108 to 134	6.1 to 6.3
13 x 9.0	4 / 95.25 to 114.3	-12 to 13	113 to 138	6.4 to 6.6

Available in White, some fitments are special order only.

8 SPOKE *Classic Rally*

SIZE	PCD RANGE	OFFSET RANGE ET	C DIMENSION BACKSPACE	APPROX WEIGHT
13 x 6.0	4 / 108	16	105	6.0
13 x 7.0	4 / 108	0	101	6.7
13 x 8.0	4 / 108	-12 / -06	101 / 107	7.4 / 7.6
13 x 9.0	4 / 108	-24 / -12	102 / 114	8.1 / 8.3
15 x 5.0	4 or 5 / 95.25 to 130	-08 to 22	69 to 99	7.6 to 8.3
15 x 5.5	4 or 5 / 95.25 to 130	-02 to 28	81 to 111	7.8 to 8.5
15 x 6.0	4 or 5 / 95.25 to 130	04 to 34	93 to 123	8.0 to 8.7
15 x 6.5	4 or 5 / 95.25 to 130	10 to 40	105 to 135	8.2 to 8.9

Available in Silver, other fitments available to special order.



5 SPOKE *Classic Rally*

SIZE	PCD RANGE	OFFSET RANGE ET	C DIMENSION BACKSPACE	APPROX WEIGHT
15 x 5.5	4 or 5 / 95.25 to 120	-04 to 16	79 to 99	7.6 to 8.2
15 x 6.0	4 or 5 / 95.25 to 120	02 to 22	91 to 111	7.8 to 8.4
15 x 7.0	4 or 5 / 95.25 to 120	00 to 25	100 to 125	8.0 to 8.6
15 x 8.0	4 or 5 / 95.25 to 120	-06 to 20	106 to 132	8.8 to 9.4
15 x 9.0	4 or 5 / 95.25 to 120	-12 to 15	113 to 140	9.3 to 9.9

Available in White, some fitments are special order only.



REVOLUTION COMPETITION WHEELS



RFX Rally



GR6 Rally

SIZE	PCD RANGE	OFFSET RANGE ET	C DIMENSION BACKSPACE	APPROX WEIGHT
13 x 5.5	4 / 95.25 to 114.3	10 to 45	93 to 128	5.9 to 6.3
13 x 6.0	4 / 95.25 to 114.3	16 to 51	105 to 140	6.0 to 6.4
14 x 5.5	4 / 95.25 to 114.3	10 to 49	93 to 132	6.9 to 7.3
14 x 6.0	4 / 95.25 to 114.3	16 to 55	105 to 144	7.0 to 7.4

Available in White.

SIZE	PCD RANGE	OFFSET RANGE ET	C DIMENSION BACKSPACE	APPROX WEIGHT
15 x 6.0	4 or 5 / 98 to 120	10 to 44	97 to 131	8.1 to 8.5
15 x 6.5	4 or 5 / 98 to 120	10 to 47	108 to 145	8.3 to 8.7
15 x 7.0	4 or 5 / 98 to 120	10 to 50	110 to 150	8.5 to 8.9

Available in Silver, selected fitments available in Gold or Gun Metal.



MILLENNIUM Rally



MILLENNIUM II Rally
Flow-Formed

SIZE	PCD RANGE	OFFSET RANGE ET	C DIMENSION BACKSPACE	APPROX WEIGHT
15 x 7.0	4 or 5 / 98 to 120	15 to 50	115 to 150	8.5 to 9.1
15 x 8.0	4 or 5 / 98 to 120	00 to 35	113 to 148	8.7 to 9.3
16 x 5.5	4 or 5 / 98 to 120	15 to 46	96 to 127	8.8 to 9.7
16 x 8.0	4 or 5 / 98 to 120	00 to 40	113 to 153	8.7 to 9.3
17 x 7.5	4 or 5 / 98 to 120	13 to 48	120 to 155	10.4 to 11.3
17 x 8.0	4 or 5 / 98 to 120	13 to 48	126 to 161	10.5 to 11.4
18 x 8.0	4 or 5 / 98 to 120	13 to 48	126 to 161	11.6 to 12.2

Available in White, selected fitments available in Gold.

SIZE	PCD RANGE	OFFSET RANGE ET	C DIMENSION BACKSPACE	APPROX WEIGHT
18 x 8.0	4 or 5 / 98 to 120	10 to 48	125 to 163	9.9 to 10.4

Available in Silver, Gold, Gun Metal & White.

REVOLUTION COMPETITION WHEELS



4 SPOKE *Classic Race*

SIZE	PCD RANGE	OFFSET RANGE ET	C DIMENSION BACKSPACE	APPROX WEIGHT
13 x 5.5	4 / 88.9 to 114.3	-17 to 10	58 to 85	3.9 to 4.1
13 x 6.0	4 / 88.9 to 114.3	-11 to 16	71 to 98	4.0 to 4.2
13 x 7.0	4 / 88.9 to 114.3	00 to 27	96 to 123	4.2 to 4.4
13 x 8.0	4 / 88.9 to 114.3	-13 to 17	98 to 128	4.3 to 4.5
13 x 10.0	4 / 88.9 to 114.3	-38 to -08	98 to 128	4.5 to 4.8

Available in Black.



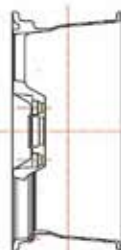
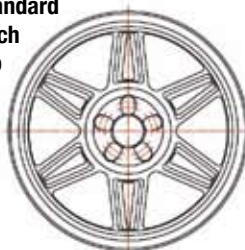
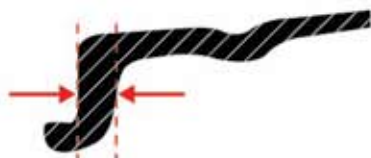
MILLENNIUM II *Race*
Flow-Formed

SIZE	PCD RANGE	OFFSET RANGE ET	C DIMENSION BACKSPACE	APPROX WEIGHT
18 x 8.0	4 or 5 / 98 to 120	10 to 48	125 to 163	9.9 to 10.4

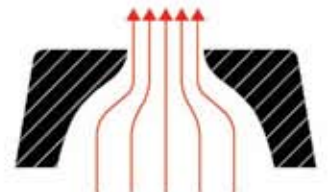
Available in Silver, Gold, Gun Metal & White.

18 x 8.0 Millennium II uses ALLU-LITE technology

ALLU-LITE technology uses flow-forming but with a reinforced inner rim of 7mm thickness which is more than 100% thicker than a standard flow-formed wheel so offers much greater resistance to impact to the inner rim.



Millennium II also has specially designed spokes to disperse hot air within the wheel quicker & reduce overheating brakes which can lead to brake fade.



REVOLUTION ROAD WHEELS



5 SPOKE *Classic Road*

SIZE	PCD RANGE	OFFSET RANGE ET	C DIMENSION BACKSPACE	APPROX WEIGHT
15 x 5.5	4 or 5 / 95.25 to 120	-04 to 16	79 to 99	7.6 to 8.2
15 x 6.0	4 or 5 / 95.25 to 120	02 to 22	91 to 111	7.8 to 8.4
15 x 7.0	4 or 5 / 95.25 to 120	00 to 25	100 to 125	8.0 to 8.6
15 x 8.0	4 or 5 / 95.25 to 120	-06 to 20	106 to 132	8.8 to 9.4
15 x 9.0	4 or 5 / 95.25 to 120	-12 to 15	113 to 140	9.3 to 9.9

Available in Black with diamond rim, some fitments are special order only.



MILLENNIUM *Road*

SIZE	PCD RANGE	OFFSET RANGE ET	C DIMENSION BACKSPACE	APPROX WEIGHT
17 x 7.5	4 or 5 / 98 to 120	13 to 48	120 to 155	10.4 to 11.0
17 x 8.0	4 or 5 / 98 to 120	13 to 48	126 to 161	10.6 to 11.2
18 x 7.5	4 or 5 / 98 to 120	13 to 48	120 to 155	11.3 to 11.9
18 x 8.0	4 or 5 / 98 to 120	13 to 48	126 to 161	11.6 to 12.2

Available in White, selected fitments available in Gold or Gun Metal.



8 SPOKE *Classic Road*

SIZE	PCD RANGE	OFFSET RANGE ET	C DIMENSION BACKSPACE	APPROX WEIGHT
10 x 5.0	4 / 101.6	19	94	3.4
10 x 6.0	4 / 101.6	6	93	3.8
12 x 5.0	4 / 101.6	28	102	5.5
13 x 5.0	4 / 95.25 / 101.6	20	94	5.6
13 x 5.5	4 / 95.25 / 101.6	25	106	5.9
13 x 6.0	4 / 108	16	105	6.0
13 x 7.0	4 / 108	0	101	6.7
13 x 8.0	4 / 108	-12 / -06	101 / 107	7.4 / 7.6
13 x 9.0	4 / 108	-24 / -12	102 / 114	8.1 / 8.3
14 x 5.5	4 / 101.6 / 114.3	22 / 31	103 / 112	7.1
14 x 6.0	4 / 95.25 / 114.3	22	109	7.3
15 x 5.0	4 or 5 / 95.25 to 130	-08 to 22	69 to 99	7.6 to 8.3
15 x 5.5	4 or 5 / 95.25 to 130	-02 to 28	81 to 111	7.8 to 8.5
15 x 6.0	4 or 5 / 95.25 to 130	04 to 34	93 to 123	8.0 to 8.7
15 x 6.5	4 or 5 / 95.25 to 130	10 to 40	105 to 135	8.2 to 8.9

Available in Silver, some fitments are special order only.



4 SPOKE *Classic Road*

SIZE	PCD RANGE	OFFSET RANGE ET	C DIMENSION BACKSPACE	APPROX WEIGHT
10 x 6.0	4 / 101.6	5	91	3.6
12 x 5.0	4 / 101.6	16	92	4.8
12 x 6.0	4 / 101.6	3	92	5.0
13 x 5.0	4 / 95.25 to 114.3	04 to 20	79 to 95	5.1 to 5.3
13 x 5.5	4 / 95.25 to 114.3	10 to 26	92 to 108	5.3 to 5.5
13 x 6.0	4 / 95.25 to 114.3	16 to 32	104 to 120	5.5 to 5.7
13 x 7.0	4 / 95.25 to 114.3	00 to 20	100 to 120	5.8 to 6.0
13 x 8.0	4 / 95.25 to 114.3	-06 to 20	108 to 134	6.1 to 6.3
13 x 9.0	4 / 95.25 to 114.3	-12 to 13	113 to 138	6.4 to 6.6

Available in Black with diamond rim, some fitments are special order only.

DMS[®]

SHOCK ABSORBERS

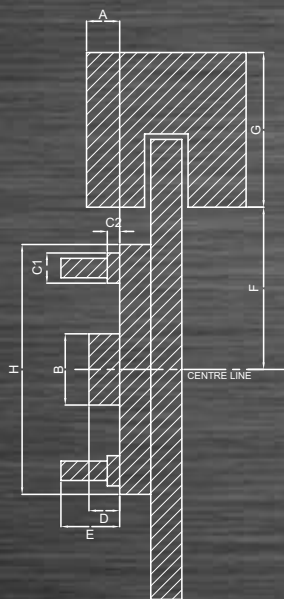
Not all shock absorbers were created equal.

Every DMS suspension contains a number of special features which set it aside from the competition.

Available in 50mm 2 & 4 way fully adjustable.

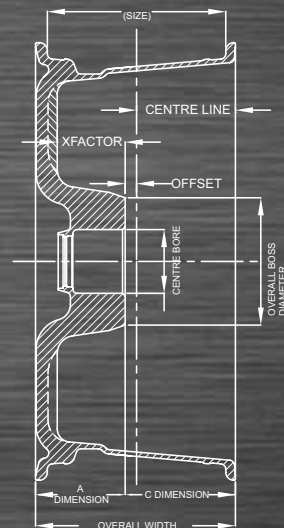


Sole European dealer
(Excluding Northern Ireland & Eire).



REVOLUTION COMPETITION WHEELS

FITMENT DETAILS



SCHEMATIC DIAGRAM OF HUB/BRAKE ASSEMBLY.

- A: Distance caliper protrudes beyond hub mounting face.
- B: Diameter of hub mounting spigot.
- C1: Diameter of location shoulder.
- C2: Height of location shoulder.
- D: Height of hub mounting spigot.
- E: Overall length of stud and pitch of thread.
- F: Distance of inside of caliper from hub centre line (Nearest point)
- G: Width of caliper.
- H: Diameter of hub mounting face.

WHEEL DRAWING FOR FITMENT CHECK.

- A Dimension: Distance from mounting face to furthest point of inside of wheel.
- C Dimension: Distance from mounting face to furthest point of outside of wheel.
- X factor: Distance from mounting to back of wheel spoke, caliper clearance.

Revolution Wheels Dept, SCP Limited, Apollo, Lichfield Road Industrial Estate, Tamworth, Staffordshire. B79 7TA. UK

Tel: + 44 (0) 1827 64111 | Fax: + 44 (0) 1827 63911 | Mob: +44 (0) 7702 845264 | Email: revolution@scp-uk.com

www.revolutionwheels.com